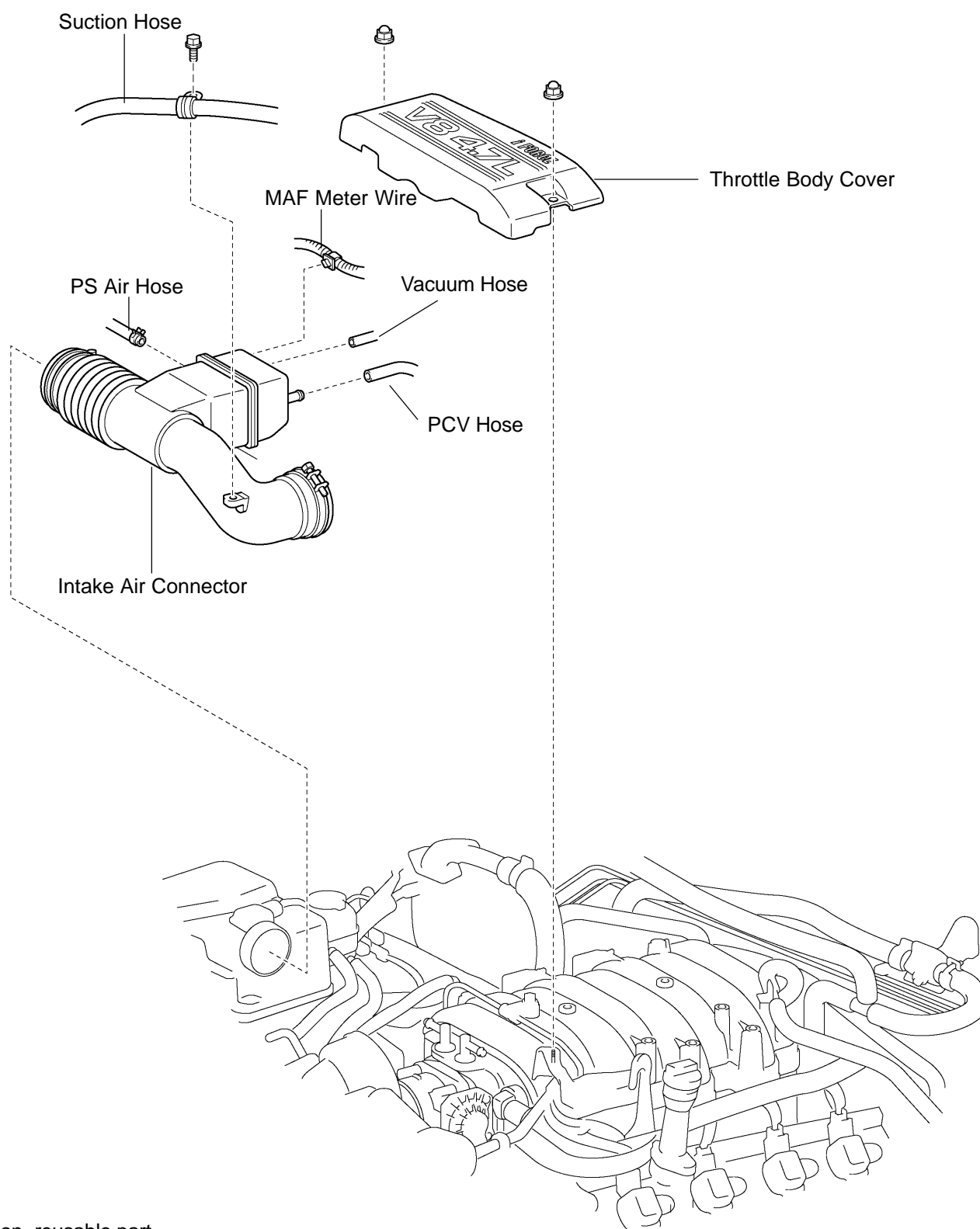


# STARTER COMPONENTS

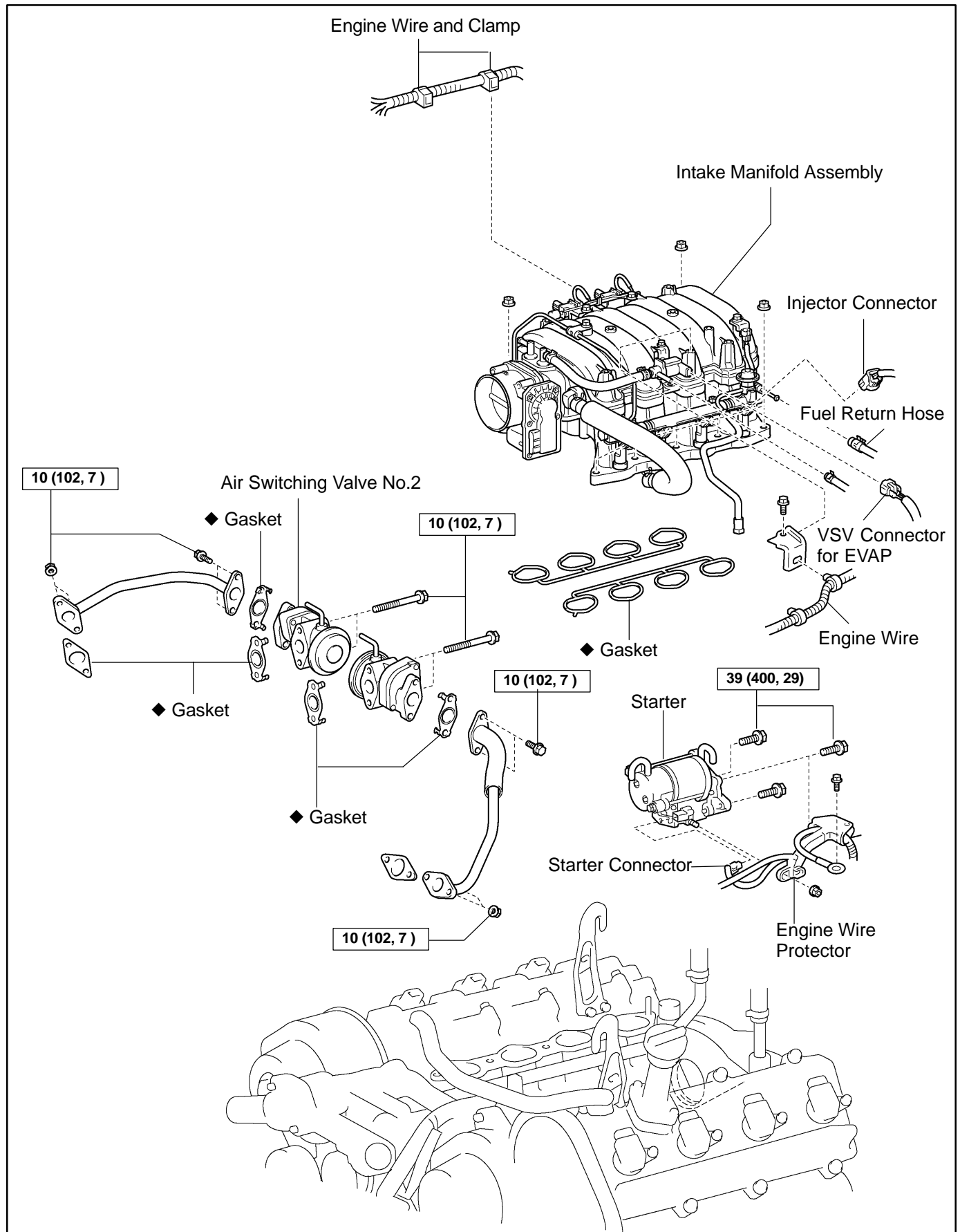
ST0GK-03



◆ Non-reusable part

Y

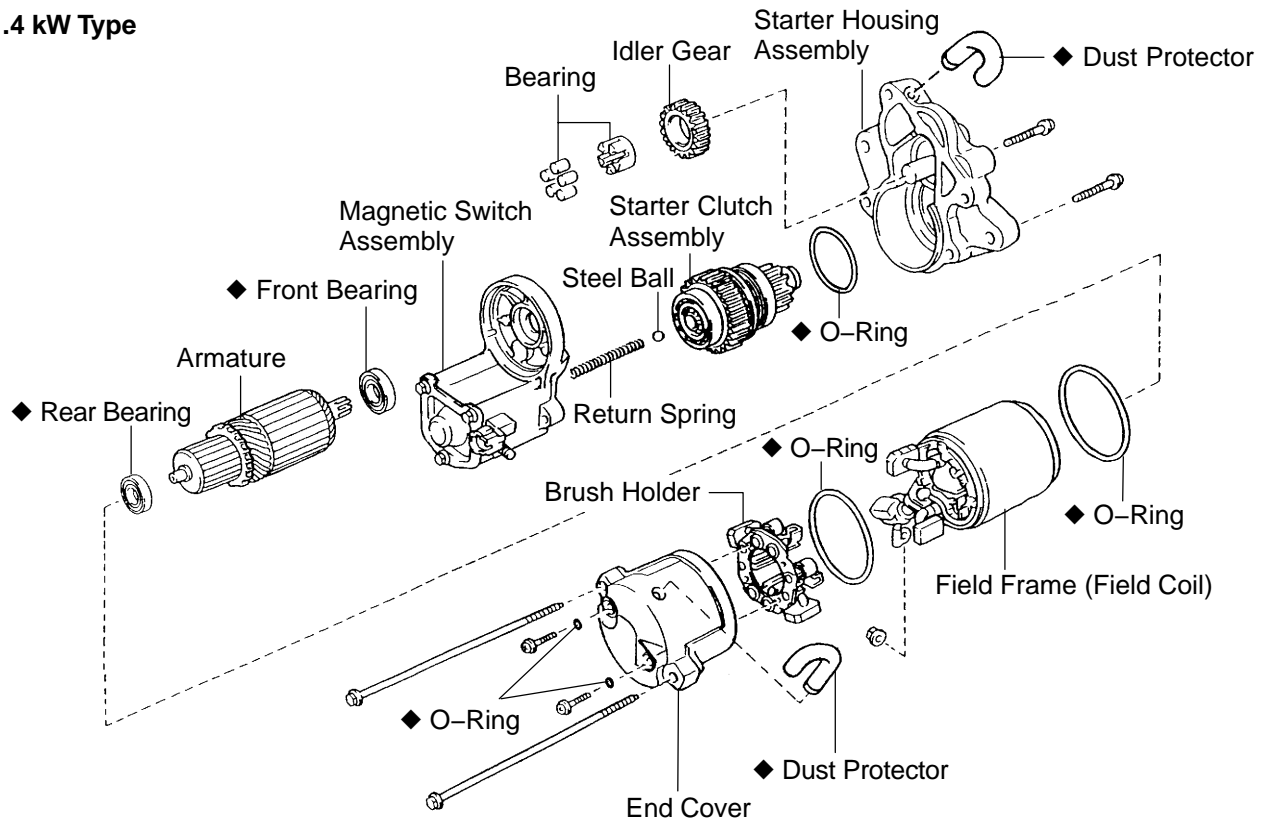
B17459



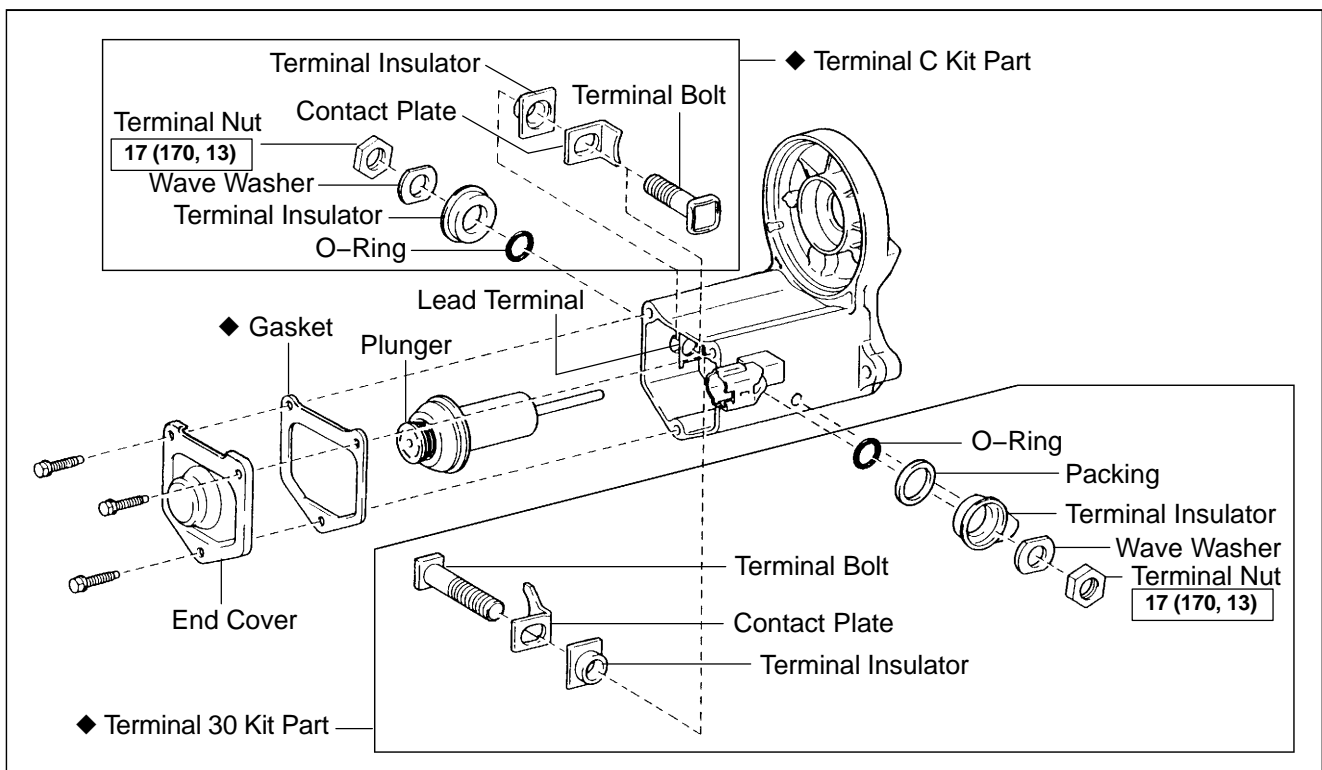
**N·m (kgf·cm, ft·lbf)** : Specified torque

- ◆ Non-reusable part

## 1.4 kW Type



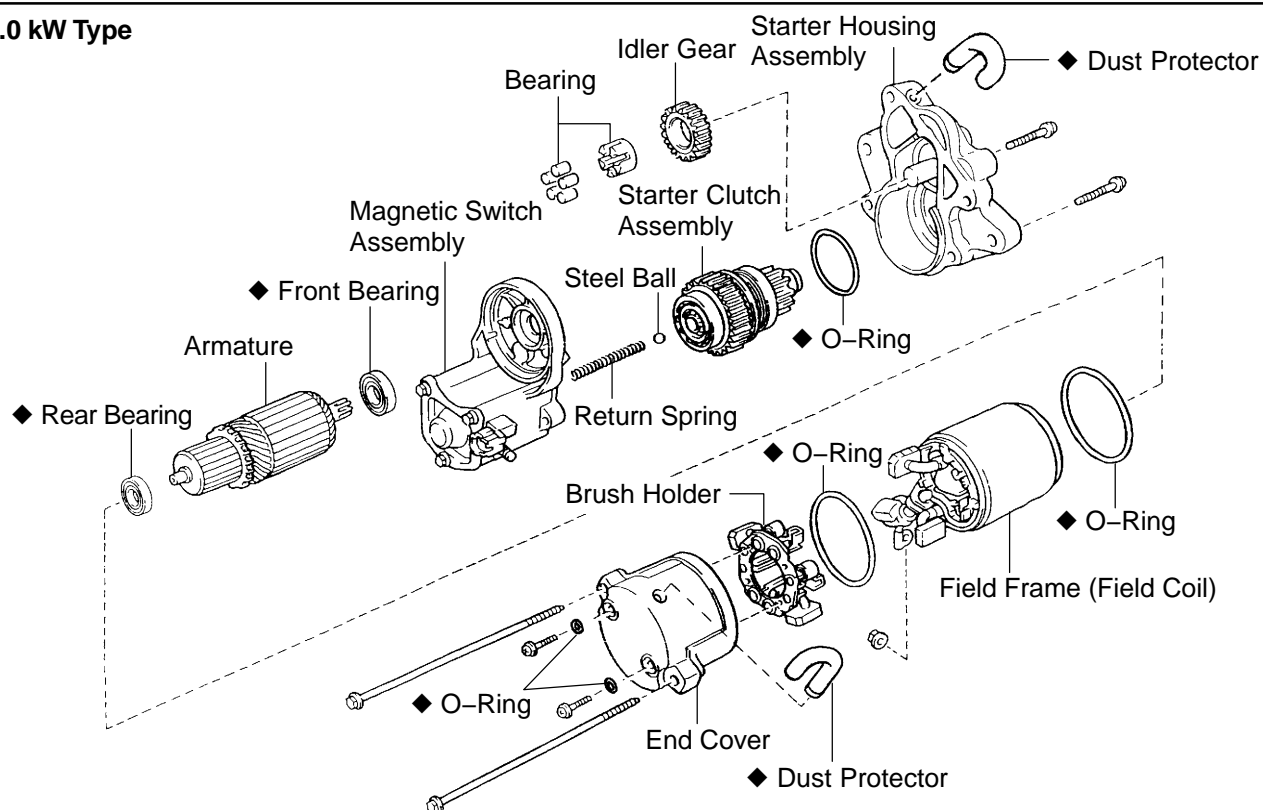
## Magnetic Switch Assembly



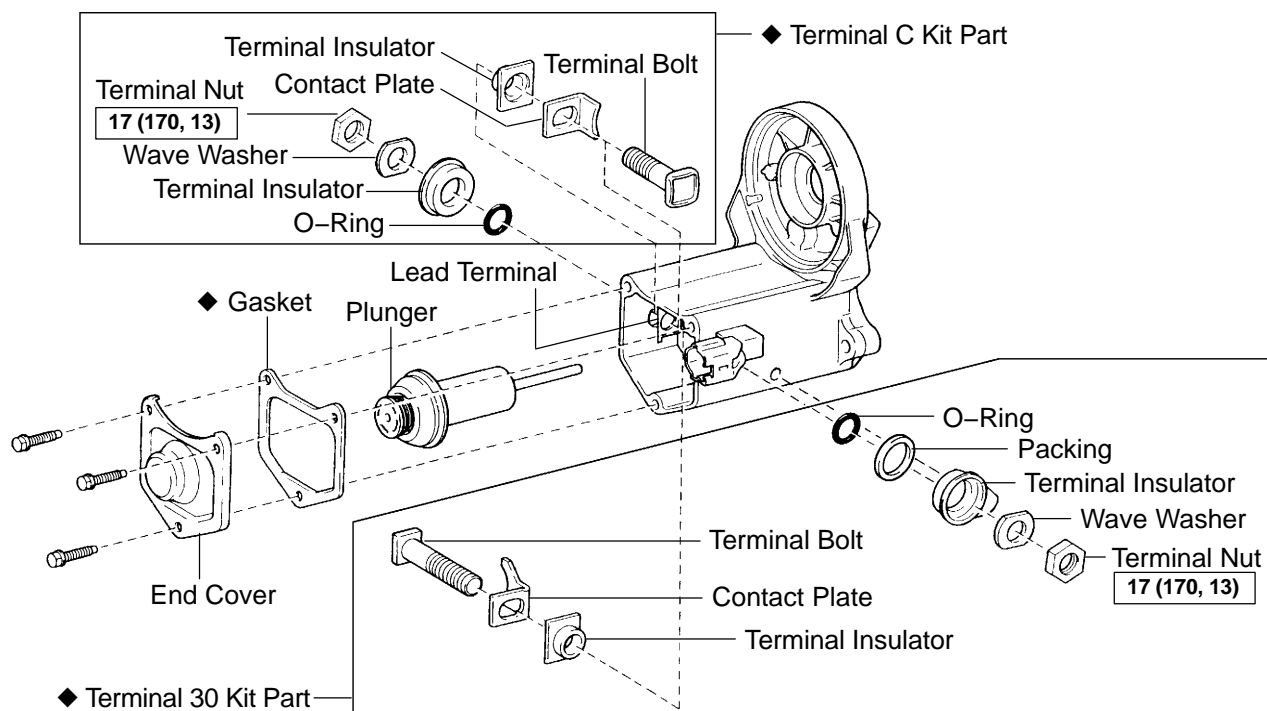
N·m (kgf·cm, ft·lbf) : Specified torque

◆ Non-reusable part

## 2.0 kW Type



## Magnetic Switch Assembly



N·m (kgf·cm, ft·lbf) : Specified torque

◆ Non-reusable part